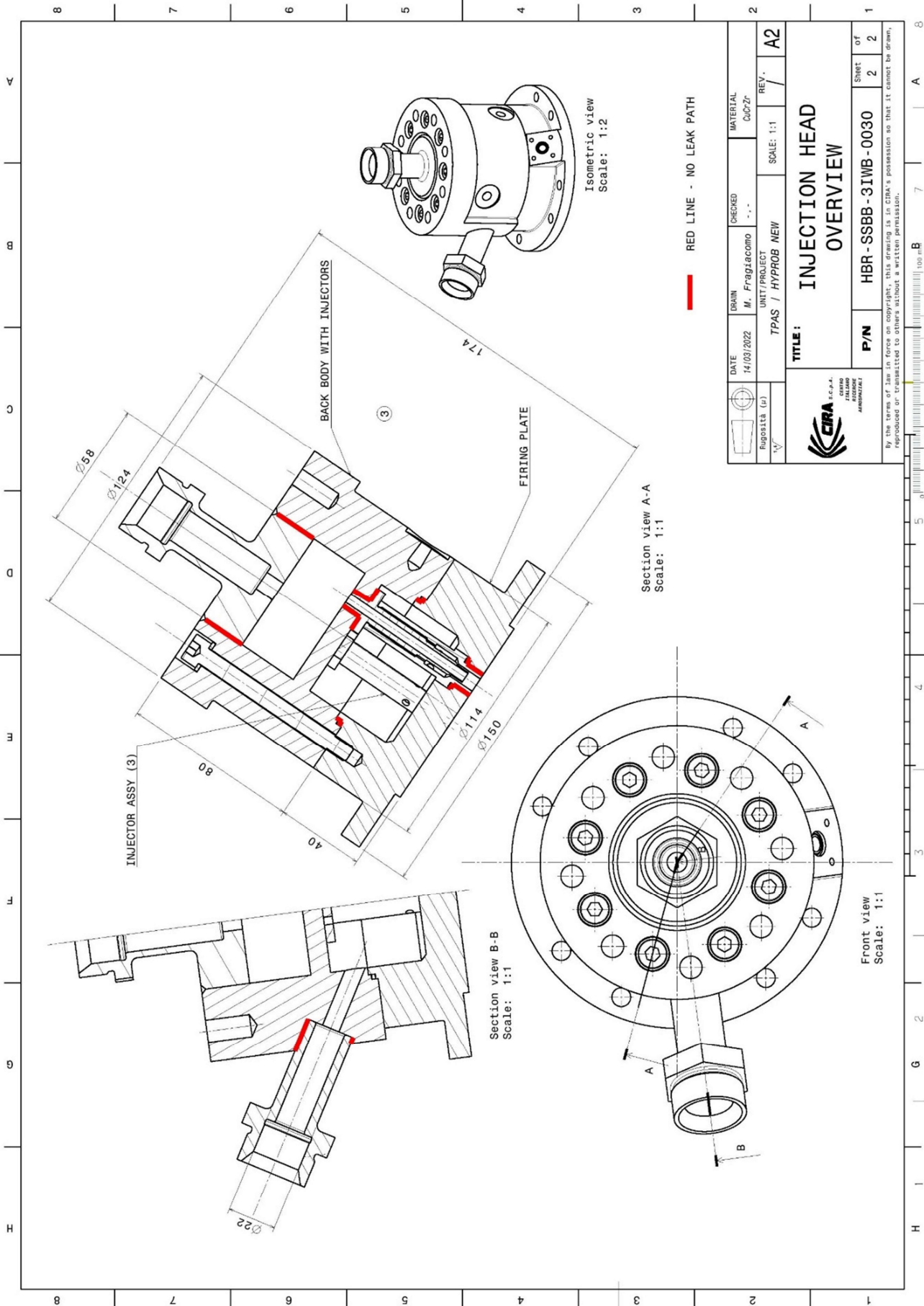
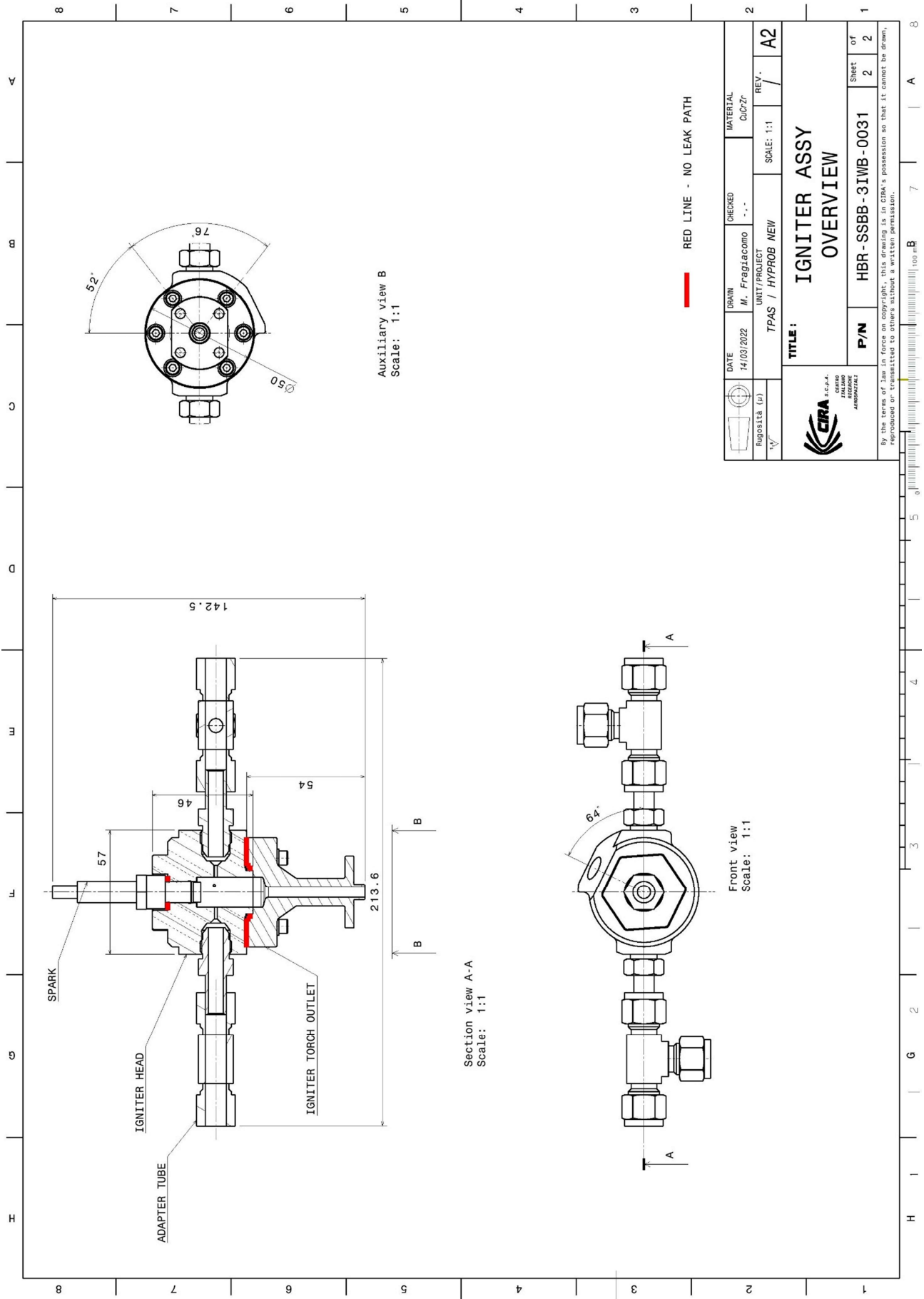


Lista delle parti dell'assieme da realizzare

Description		DWG	Q.ty	Material
3IWBB ASSY		HBR-SSBB-3IWB-0050	1	
INJECTION HEAD		HBR-SSBB-3IWB-0030	1	
FIRING PLATE		HBR-SSBB-3IWB-0032	1	CuCrZr
BACK BODY WITH INJECTORS		HBR-SSBB-3IWB-0054	1	
BACK BODY WELDED		HBR-SSBB-3IWB-0033	1	
MAIN BODY		HBR-SSBB-3IWB-0034	1	Inconel 718
O2 INLET		HBR-SSBB-3IWB-0035	1	Inconel 718
CH4 INLET		HBR-SSBB-3IWB-0036	1	Inconel 718
INJECTOR ASSY		HBR-SSBB-3IWB-0049	3	
INJECTOR POST		HBR-SSBB-3IWB-0051	1	Inconel 718
INJECTOR SLEEVE		HBR-SSBB-3IWB-0052	1	CuCrZr
INJECTOR HEAD SEAL		HBR-SSBB-3IWB-0048	1	Copper 99%
COPPER SEAL 13,2 x1,9		HBR-SSBB-3IWB-0053	3	Copper 99%
IGNITER		HBR-SSBB-3IWB-0031	1	
IGNITER TORCH OUTLET		HBR-SSBB-3IWB-0037	1	TZM
IGNITER HEAD		HBR-SSBB-3IWB-0038	1	TZM
COPPER SEAL 24,5 X 1,9		HBR-SSBB-3IWB-0055	1	Copper 99%
COPPER SEAL 14,8 X 1,5		HBR-SSBB-3IWB-0056	1	Copper 99%
CANDELA BOSCH UR 4AS		comm	1	
TUBE ADAPTER -6-TA-1-6AN (SWAGELOK)		comm	2	
UNION -600-3-4-6 (SWAGELOK)		comm	2	
DISCO 2 - WINDOWED ASSY		HBR-SSBB-3IWB-0060	1	
DISCO 2 - WINDOWED		HBR-SSBB-3IWB-0043	1	CuCrZr
WINDOW		HBR-SSBB-3IWB-0058	3	Quartz
WINDOW FRAME		HBR-SSBB-3IWB-0059	3	AISI
WINDOW SEAL		HBR-SSBB-3IWB-0061	3	Copper 99%
UNION SS-600-6 (SWAGELOK - UNION 3/8")		comm	3	
TUBE ADAPTER -6-TA-1-6AN (SWAGELOK)		comm	3	
DISCO 1 - SPACER DISK		HBR-SSBB-3IWB-0044	1	CuCrZr
DISCO 3 - THROAT HS**		HBR-SSBB-3IWB-0045	1	TZM
COPPER SEAL 96,4 x 1,9		HBR-SSBB-3IWB-0042	3	Copper 99%
IGNITER SEAL		HBR-SSBB-3IWB-0047	1	Copper 99%
**si può intercambiare con DISK 3 - WATER COOLED THROAT		HBR-SSBB-3IWB-0057	1	Mix material





Auxiliary view B
Scale: 1:1

Section view A-A
Scale: 1:1

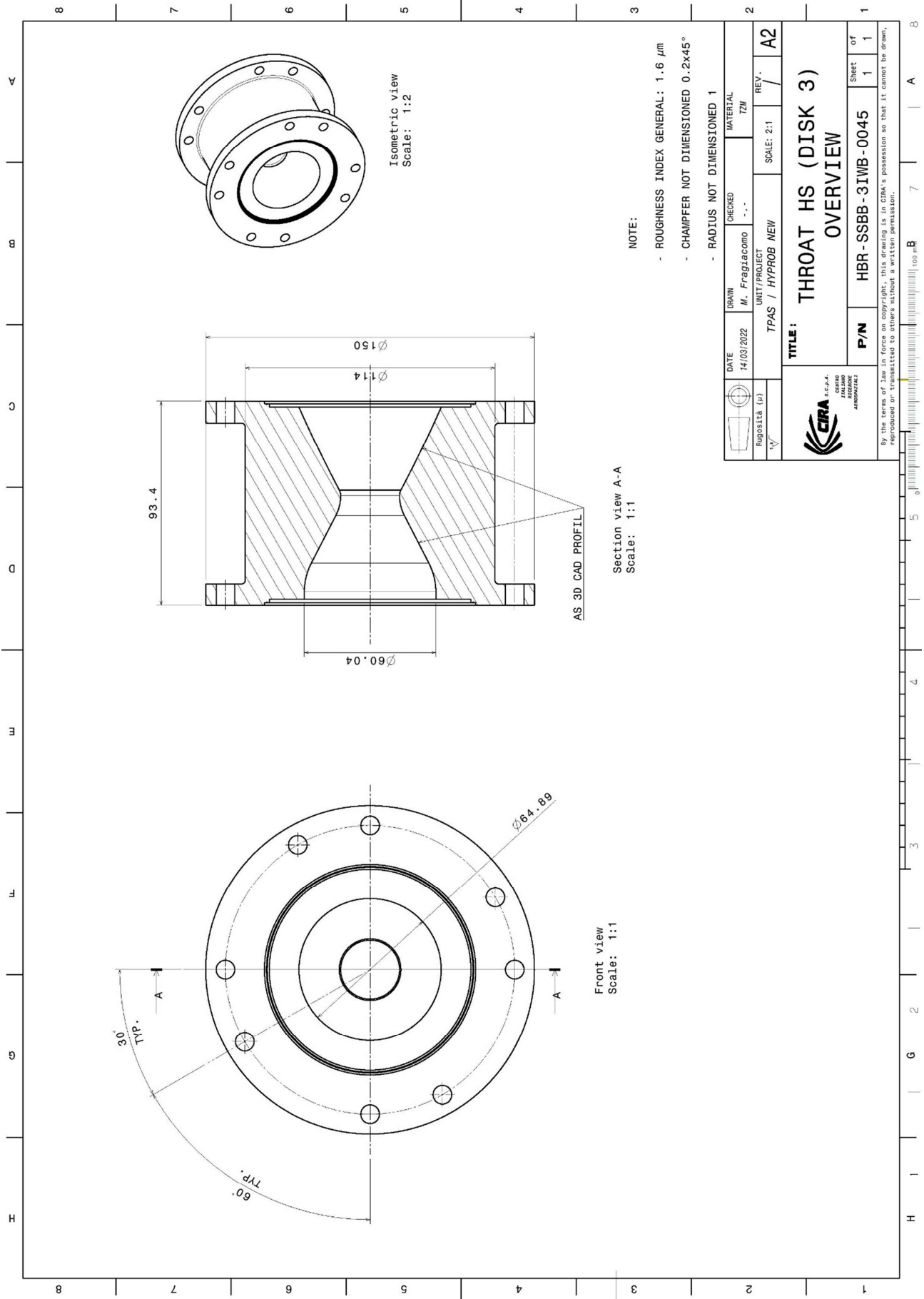
Front view
Scale: 1:1

RED LINE - NO LEAK PATH

DATE 14/03/2022	DRAWN M. FragiLacomo	CHECKED ---	MATERIAL CuCrZr
REVISIONS (R)	UNIT/PROJECT TPAS / HYPROB NEW	SCALE: 1:1	REV. A2
TITLE: IGNITER ASSY OVERVIEW			
P/N HBR-SSBB-3IMB-0031		Sheet of 2 2	



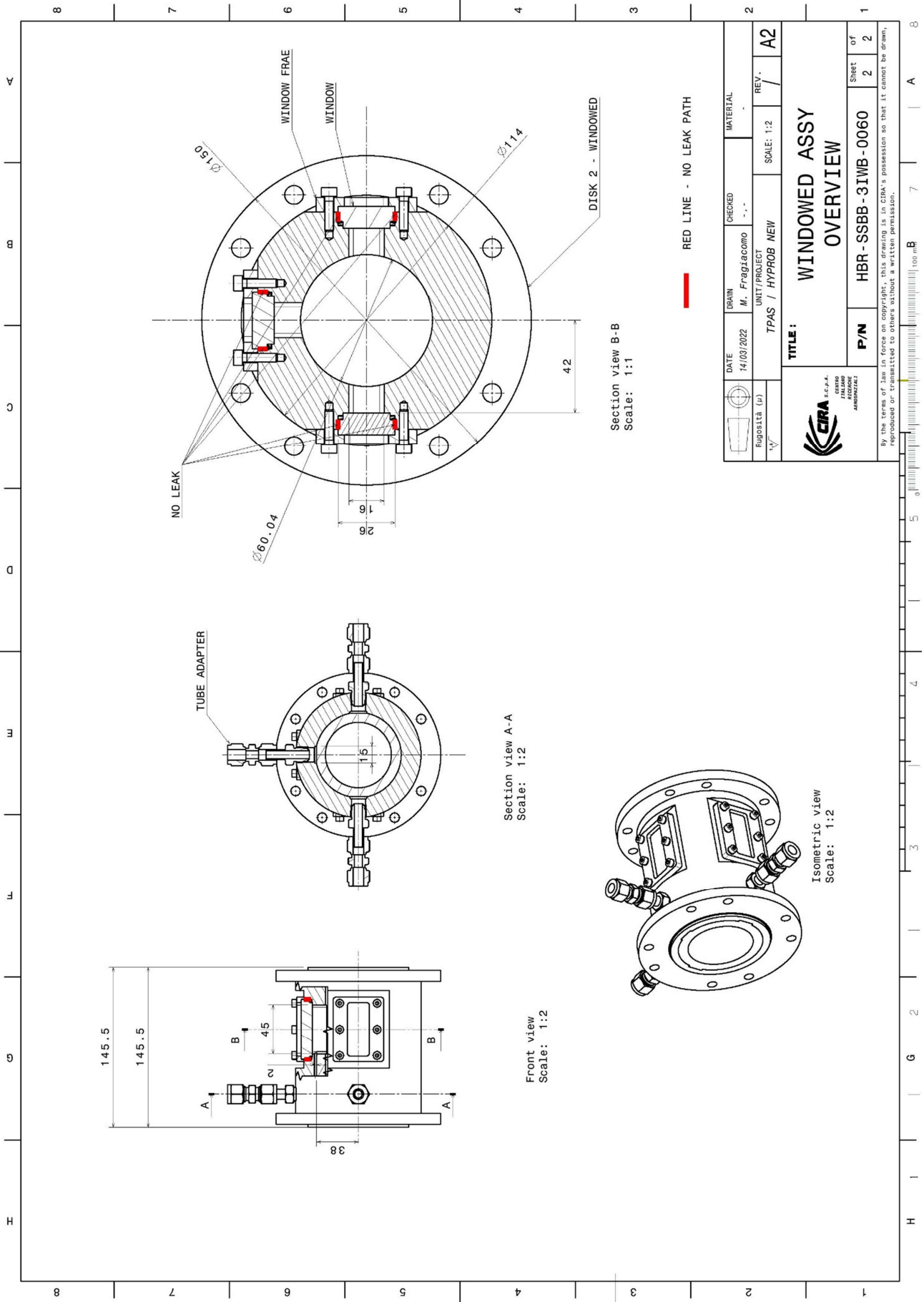
By the terms of law in force on copyright, this drawing is in CIRA's possession so that it cannot be drawn, reproduced or transmitted to others without a written permission.



DATE	14/03/2022	DRAWN	M. FragiLacomo	CHECKED	TZM	MATERIAL	
REVISIONS (R)		UNIT/PROJECT	TPAS / HYPROB NEW	SCALE:	2:1	REV.	A2
TITLE: THROAT HS (DISK 3) OVERVIEW							
P/N		HBR - SSBB - 3IMB - 0045		Sheet		of	
				1		1	



By the terms of law in force on copyright, this drawing is in CIRA's possession so that it cannot be drawn, reproduced or transmitted to others without a written permission.



DATE	14/03/2022	DRAWN	M. FragiLacomo	CHECKED	-.-.-	MATERIAL	
REVISIONS (R)		UNIT/PROJECT	TPAS / HYPROB NEW	SCALE	1:2	REV.	A2
TITLE: WINDOWED ASSY OVERVIEW							
P/N		HBR - SSBB - 3IMB - 0060		Sheet of		2 / 2	



By the terms of law in force on copyright, this drawing is in CIRA's possession so that it cannot be drawn, reproduced or transmitted to others without a written permission.

